



FlakeSelect®

Cargill Commercial
Food Processing Salts

FlakeSelect® System

FlakeSelect® is an innovative product that leverages Cargill's patent-pending compacting technology to combine and agglomerate ingredients.

The resulting particles are homogeneous, low in bulk density, highly soluble and provide superior adherence for topical applications as compared to dry blended or granulated products.

www.cargill.com/salt

Cargill®

FLAKESELECT®

The FlakeSelect® functional system physically modifies crystal structure to increase functionality of singular or multiple ingredients. The FlakeSelect® process creates ingredient(s) that have:

- Greater surface area that contributes to better blendability, solubility, and adherence
- Optimal granulation with four precise screen cuts to perform in a wide variety of food applications
- Agglomerated particles that offer even distribution of base components joined in a single crystal
- FlakeSelect® products that contain potassium chloride can be used to reduce sodium in a wide variety of food products

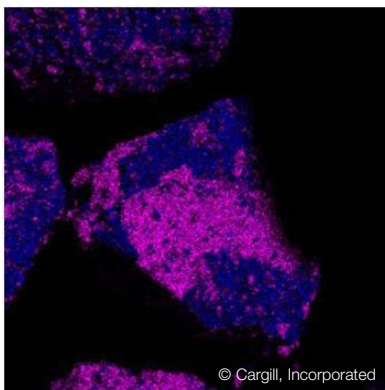
FlakeSelect®

CONTACT

Cargill Salt
P.O. Box 5621
Minneapolis, MN 55440
Phone: 888-385-SALT (7258)

Product Application Matrix					
		Reduced Sodium Solutions			
	Typical Range (US Mesh)	KCl	KCl/NaCl	KCl/Sea Salt	Sea Salt
Extra Coarse	16-40	Crackers, bakery topping, pretzels, meat rubs	Crackers, bakery topping, pretzels, meat rubs	Reduced Sodium plus Sea Salt!	Bakery topping, pretzels and meat rubs
Coarse	20-70	Bakery topping, crackers, snacks, seasoning blends	Bakery topping, crackers, snacks, seasoning blends		Bakery topping, crackers, snacks, seasoning blends
Fine Flake	40-100	Dressings, sauces/oils, seasoning blends, cheese, mixes	Dressings, sauces/oils, seasoning blends, cheese, mixes		Dressings, sauces/oils, seasoning blends, cheese, mixes
Flour	70-200	Cereal, snacks, seasoning and marinades, dry mixes	Cereal, snacks, seasoning and marinades, dry mixes		Cereal, snacks, seasoning and marinades, dry mixes

Note: FlakeSelect® products do not contain iodine.



Magnified image of FlakeSelect™ Potassium Chloride/Salt Fine Flake.

This image demonstrates how the FlakeSelect® functional process agglomerates the individual components into one crystal.

 Potassium Chloride

 Salt

All specifications are approximate. Please contact your broker or Cargill representative for exact specifications.

© 2014 Cargill, Incorporated. All rights reserved.
SALT-3510 (2/14)

www.cargill.com/salt

