

# Diamond Crystal® Kosher Salt for Foodservice

Diamond Crystal® Kosher Salt is created through the Alberger process, the only one of its kind in the U.S.:

- The process creates pyramid-shaped, jagged edged crystals that taste salty while delivering less sodium.
- The result: Chefs can quickly see, feel and taste the difference.

## See the difference:

- Crystal size control: The multi-faceted crystals can be crushed between fingertips for exact seasoning.
- Light, flaky crystals: even when pinched to smaller pieces, Diamond Crystal® Kosher Salt pyramid-shaped crystals provide much greater surface area than standard granulated salts.

## Feel the difference:

- A coarse, yet flaky, texture for fingertip control.
- Superior adherence to food.
- Smooth dissolvability.
- Perfect for rimming drink glasses.



## Sodium Control:

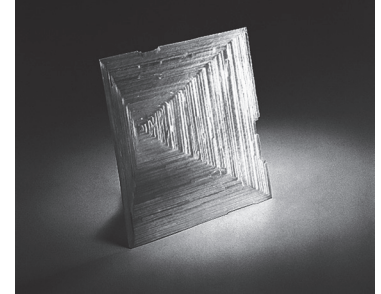
- Delivers 53% less sodium by volume than granulated salt.
- Switch out your current salt for Diamond Crystal® Kosher Salt on a 1:1 recipe ratio to reduce sodium immediately.
- To further reduce sodium, try using just 25% of a recipe's salt at the start, and finish with Diamond Crystal® Kosher Salt at the end.



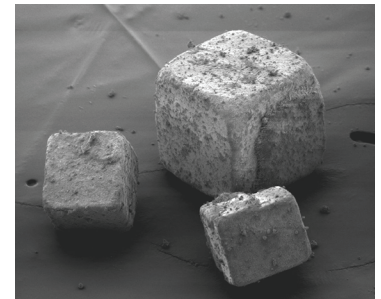
Nutrition Facts	
Serving Size 1/4 tsp (0.7g)	
Amount Per Serving	
<b>Calories</b>	<b>0</b>
	% DV*
Total Fat 0g	0%
Sodium 280mg	12%
Total Carbohydrate 0g	0%
Protein 0g	

Not a significant source of saturated fat, trans fat, cholesterol, dietary fiber, total sugars, added sugars, vitamin D, calcium, iron and potassium.

\*%DV = % Daily Value



Enlarged Alberger Crystal

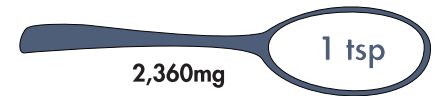


Enlarged Table Salt Crystal

## Sodium Comparison Chart:



DIAMOND CRYSTAL® KOSHER SALT



GRANULATED IODIZED TABLE SALT

\*Calculations based on typical bulk density measurements.

Product	Item No. (wood pallet/ chep pallet)	Pallet Count	Pallet Pattern (tiers)	Pallet Dimensions	Product & Pallet Weight (lbs.) (wood pallet/ chep pallet)	Case Cube (cubic ft.)	Package Dimension (inches)	Case Dimension (inches)	Case/ Tray Gross Weight (lbs.)	GTIN base unit (UPC)	GTIN Case	GTIN Pallet
3 lb. box (9 per case) Foodservice	110035832/ 110035933	60	5 tiers of 12	40x48x55	1721/1731	.887	3x5x9	15.8x9.8x9.9	27.77	000 13600 02001 9	500 13600 02001 4	600 13600 02001 1
1.36kg (3 lb.) box (9 per case) Foodservice - Canada	130078383	60	5 tiers of 12	40x48x55	1721/1731	.887	3x5x9	15.8x9.8x9.9	27.77	000 13600 00024 0	100 13600 00024 7	200 13600 00024 4

We welcome your questions and comments. Please call us at 1-888-385-7258 (SALT) or visit us online at [www.diamondcrystalsalt.com](http://www.diamondcrystalsalt.com).

Cargill Salt  
P.O. Box 5621  
Minneapolis, MN 55440

